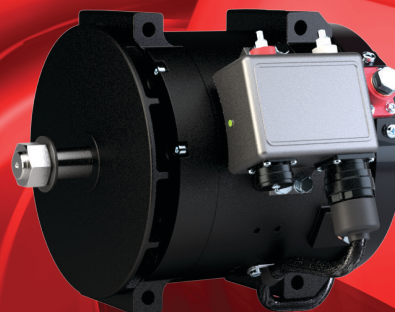




C570 Alternator

14 Volt 415 Amp

As the technology leader in the design and development of heavy duty high output alternators, C.E. Niehoff & Co introduces our most compact SAE J180 pad-mount compatible alternator to date, the 14V, 415A C570. This alternator provides an industry beating 205 amps of output at idle and 93C/200F measured per SAE J56, and up to 415 amps at high RPM and 22C/72F. The C570 alternator package size, high output capability and rugged design make it the perfect alternator for vehicle applications where reliable, high alternator current is critical under the harshest of conditions.



Alternator Characteristics

Output data is measured during *temperature stabilized* performance testing at 22°C/72°F and 93°C/200°F in accordance with SAE J56 at 14V test voltage.

High efficiency operation: Lower internal operating temperatures resulting in longer life. Less engine power needed to produce electric power means more engine power available for other needs.

Sealed bearings have high temperature grease and are heat stabilized for extended service life in hot engine compartments.

Digital smart regulator option allows for battery charge rate optimization in all climates and operating conditions when used with corresponding voltage and temperature sense harness. Smart regulators also feature J1939 compatible communications and operation with CEN's J1939 interfacing software.

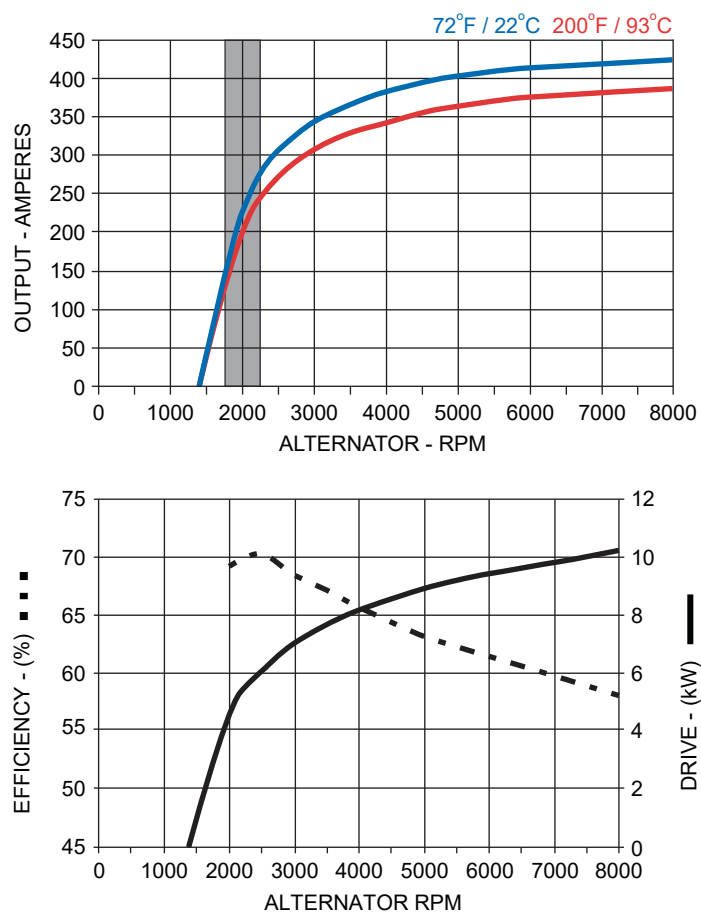
Overvoltage Cut-Out Circuit (OVCO) is a safety feature that detects high voltage in excess of normal voltage transients and prevents sustained overvoltage conditions.

Unique brushless construction eliminates rotating windings, brushes and slip rings. This increases durability, extends service life, eliminates arcing and reduces electromagnetic interference (EMI).

Direct interchange, pad mount design is compatible with 190mm bracket.

Designed and manufactured in the U.S.A.

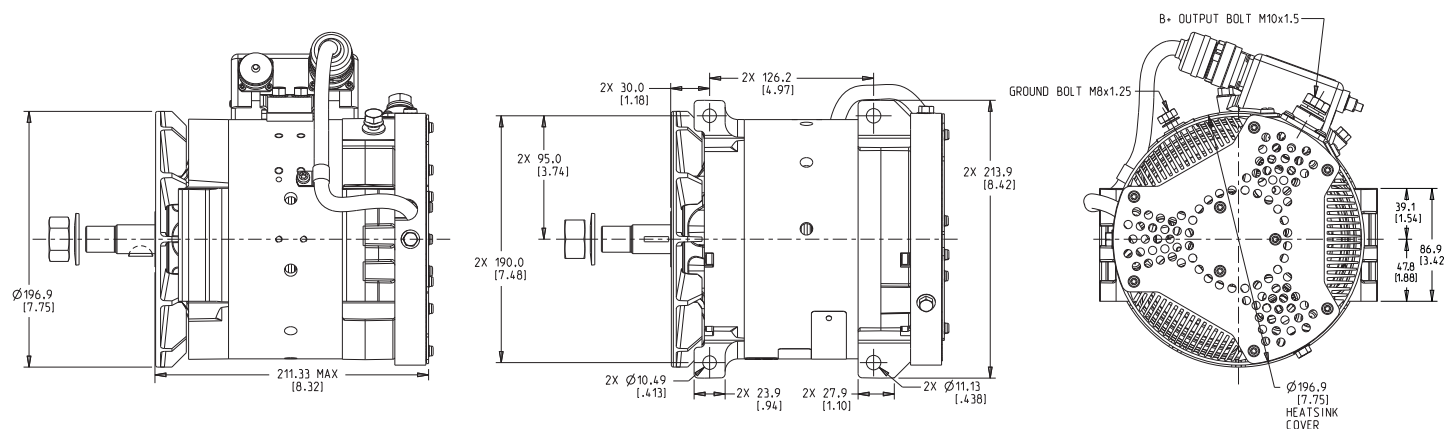
Output and Efficiency



The measurements listed on the curves are taken at the listed ambient temperatures with a stabilized machine temperature, as required by SAE J56 (6.1.1)/ISO8854 (5.1.1) 'STABILIZED PERFORMANCE TESTS'. The shaded area highlights output available at typical engine idle alternator speed.

Dimensions

Linear Measure mm [in]



Unit Specifications

SAE J180 190mm pad mount bracket compatible

External regulator

Bidirectional rotation

Rated for 8000 RPM continuous operation and momentary over speed to 10000 RPM







90 - 100 lb. Belt tension

Accessories

A2-3108 Digital Smart regulator

8, 10, or 12 groove pulley

Charging System Status LED Indicator

-  Steady green indicates regulator is energized and alternator is producing regulated voltage at set point.
-  Flashing green indicates voltage is at set point with surge suppression disabled due to high ripple current or battery less operation.
-  Steady amber indicates regulator is energized and voltage is below set point or alternator is overloaded.
-  Flashing amber indicates the alternator is not rotating.
-  Steady red indicates field coil failure.
-  Flashing red indicates over voltage cut out condition. (OVCO)

